



WebSwitch™ Remote Power Switch is the ideal solution for remote reboot and many remote power control applications. WebSwitch™ has two power outlets which can be independently controlled using a web browser.

It is completely self-contained and includes a built-in web server, so no external servers, services, or subscriptions are required.

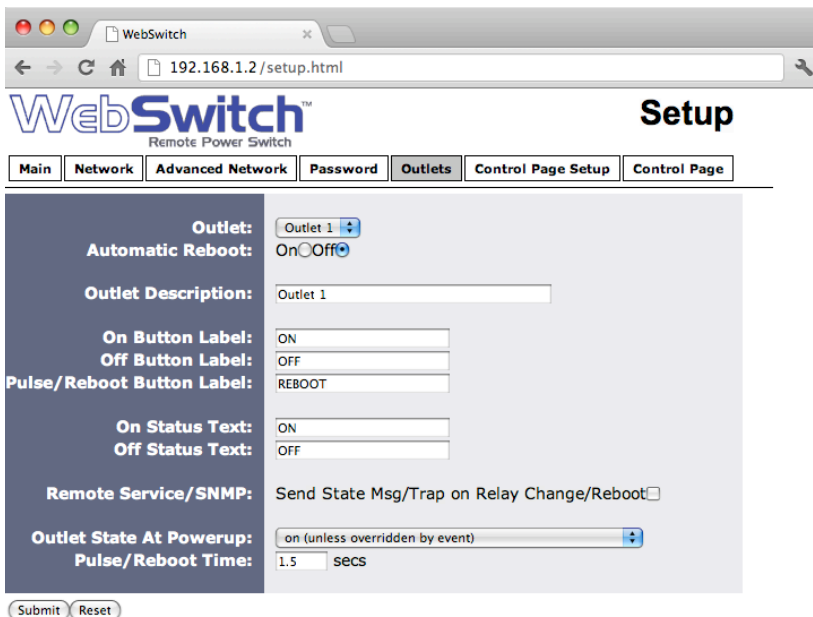
In addition to remote control, WebSwitch™ has an automatic reboot controller which can be configured to reboot computers or network devices when they become unresponsive.

WebSwitch™ is available in two models, WebSwitch™ and WebSwitch Plus™.

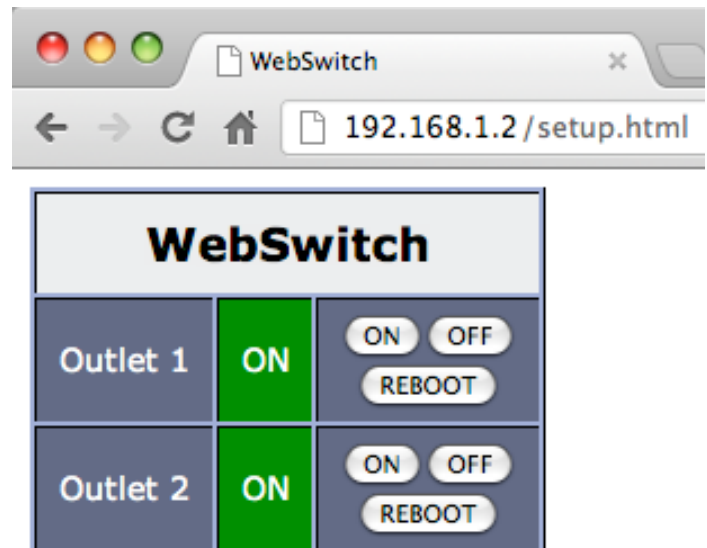
Both models are engineered to provide excellent performance for many years while running 24/7. You can have confidence using WebSwitch™ when your critical applications demand reliability and integrity.

Features:

- Control from a standard web browser - no special software required.
- Automatic Reboot, use to reboot devices when ping responses fail.
- Built-in web server provides direct access to device; no external servers, services or subscriptions required.
- Supports HTTP, SNMP, and Modbus TCP/IP.
- "Remote Services" can be used to initiate connection with external servers.
- Password protection.
- IP filter provides simple firewall.
- Selectable TCP Ports.
- 10/100 Mbps Ethernet connectivity.
- Field re-programmable; install firmware updates when available.
- Attractive, rugged enclosure made of flame resistant plastic.
- Operates worldwide (100-240V AC; 50/60Hz).
- Wall mountable or optional rack mounting kit available.



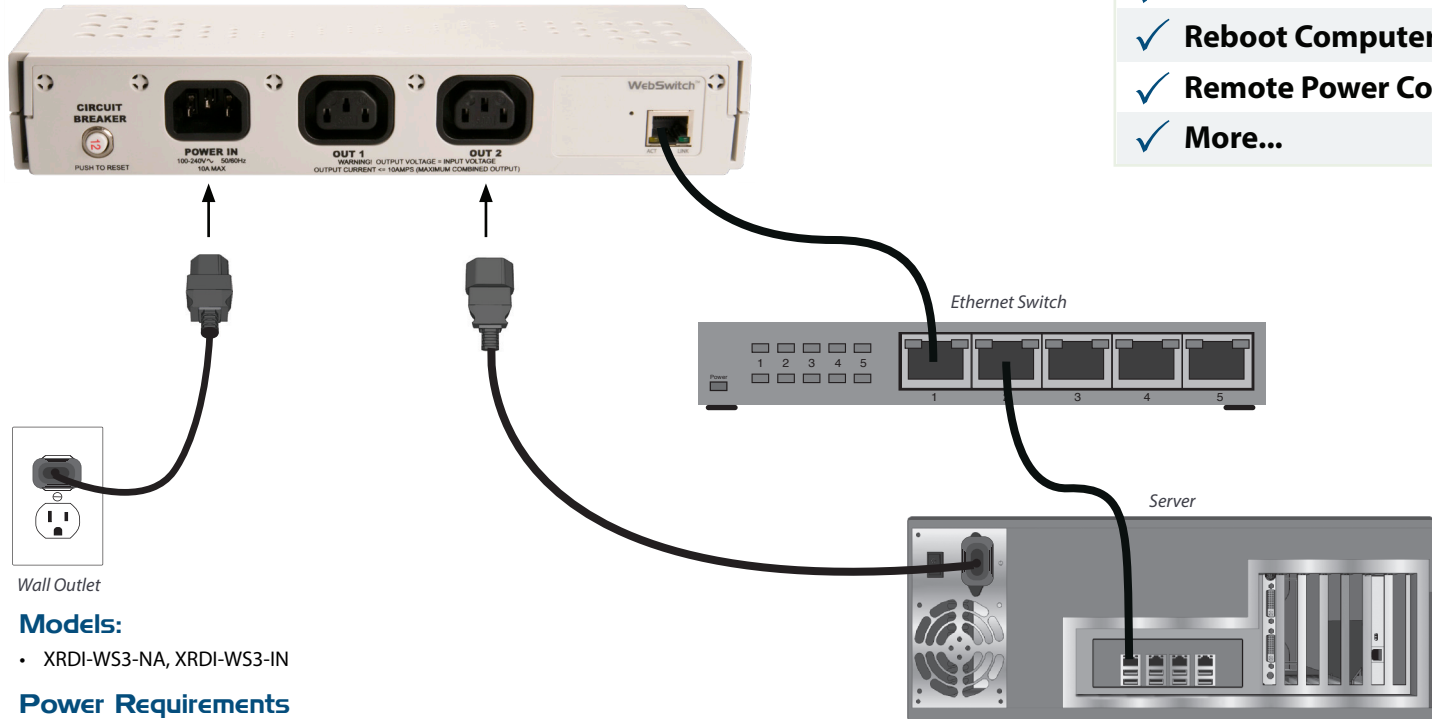
Outlets Options



Control Page

APPLICATIONS & SPECS

Automatic/Remote Reboot for Servers



Additional Applications

- ✓ Reboot Network Devices
- ✓ Reboot Computers
- ✓ Remote Power Control
- ✓ More...

Models:

- XRDI-WS3-NA, XRDI-WS3-IN

Power Requirements

- Voltage: 100-240V AC (47-63Hz)
- Input Frequency: 47-63Hz
- Input Connector: IEC 320 Appliance Connector (C14 Male)
- Max Current: 10A *(DO NOT USE WEBSWITCH TO CONTROL MORE THAN 10 AMPS)*

Relay Contacts

- Number of Relays: 2
- Relay Connector: IEC C13 Female
- Contact Type: SPDT (Form 1C)
- Load Type: General Purpose
- Contact Resistance: < 30 milliohms initial
- Contact Material: AgSnO2
- Electrical Life: 100K cycles (Typical)
- Mechanical Life: 10M cycles (Typical)
- Environmental Rating: Over voltage Category II, Pollution Degree 2
- Relay Modes: ON/OFF or Pulse/Reboot
- Pulse Timer Duration: 0.1 to 86,400 Seconds (1-day)

Real-Time Clock

- Manual or NTP (Network Time Protocol) setup
- NTP Sync Period: Once, Daily, Weekly, On Power-up
- Auto Daylight Savings Adjustment
- Battery (capacitor) Power Backup

Network

- Type: 10/100 Base-T Ethernet Port
- Setup: Static IP address assignment, HTTP port selectable

Connectors

- Output Connectors: IEC 320 Appliance Connector (C13 Female)
- Network: 8-pin RJ-45

LED Indicators

- Number of LEDs: 5
 - Power on
 - Out On 1-2
 - Network linked
 - Network activity

Physical

- Operating Temperature: -4°F to 104°F (-20°C to 40°C)
- Size:
 - 10.65 inches (27.11 cm) wide
 - 1.75 inches (4.44 cm) tall
 - 3.29 inches (8.36 cm) deep
- Weight: 1 lb. 3 oz. (542 grams)
- Enclosure Material: Lexan 940 Polycarbonate Plastic
- Enclosure Flame Rating: UL94 V0

Protocols

- HTTP, XML, Modbus, SNMP, Remote Services

Password Settings

- Password protection on setup page: Yes
- Password protection on control page: Optional
- Password Encoding: Base 64
- Max Password Length: 13 Characters

Electromagnetic Compliance:

- IEC CISPR 22, CISPR 24
- FCC 47CFR15
- EU EN55024, EN55022
- EN55022:2006: Class B
- EN61000-3-2
- EN61000-3-3
- EN55024:2006
- IEC 61000-4-2
- IEC 61000-4-3
- IEC 61000-4-4
- IEC 61000-4-5
- IEC 61000-4-6
- IEC 61000-4-8
- IEC 61000-4-11
- ITE-Class B



Product Safety Compliance

- CAN/CSA-C22.2 No. 60950-1-03 First Edition
- IEC 61010-1