

### PRODUCT OVERVIEW



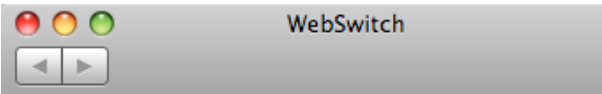
WebSwitch Plus™ includes all the features of WebSwitch™ as well as additional features such as remote temperature monitoring, discrete inputs, event scheduling, logging, and email alerts. This provides a more complete solution for remotely controlling servers and monitoring their environment.



WebSwitch with optional Rack Mount Kit

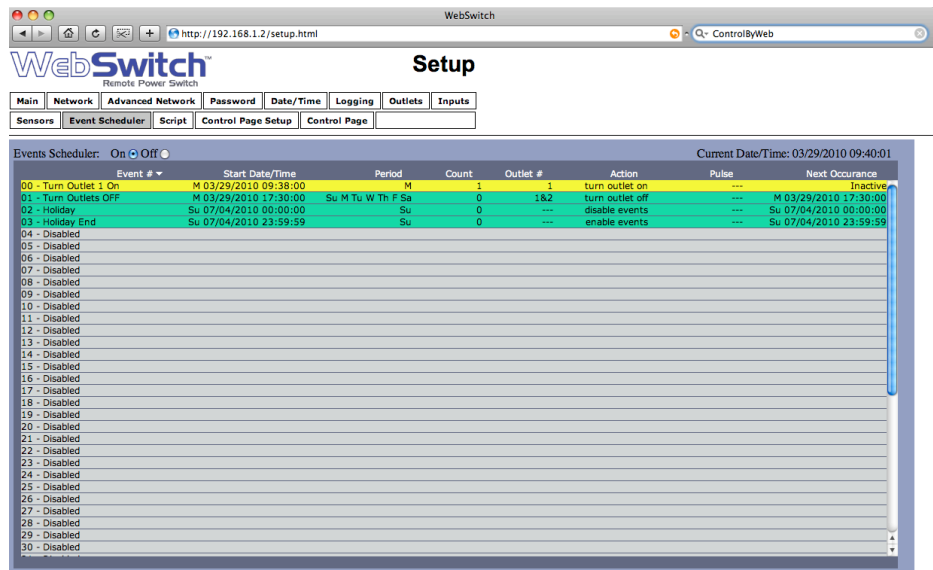
### Features:

- Up to four temperature and/or humidity sensors can be added for environmental monitoring (one temperature sensor included).
- Dry-contact sensors or switches can be connected for local control of outlets or for monitoring external devices.
- Real-time clock, can automatically adjust for daylight savings time, sync with NTP server.
- Added relay contact protection.
- Event scheduler with yearly calendar.
- Customizable email alerts.
- Logging: Log outlet changes, automatic reboots, high/low temperatures, network traffic, and more.
- System log provides detailed diagnostic information.
- Simple scripts can be written in BASIC for advanced functionality.
- Configure manually or with DHCP.



WebSwitch		
Outlet 1	ON	ON OFF REBOOT
Outlet 2	OFF	ON OFF REBOOT
Input 1	OFF	
Input 2	OFF	
Sensor 1	74.3 °F	
Sensor 2	73.5 °F	
Sensor 3	38.6 %RH	
Current Time: Tue, 01 Jun 2010 09:29:39		

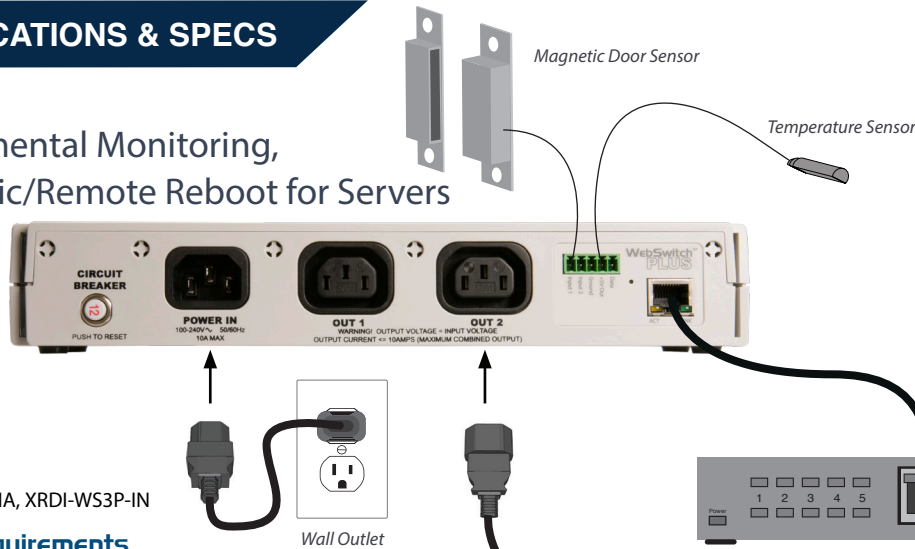
Control Page



Events Tab

### APPLICATIONS & SPECS

Environmental Monitoring,  
Automatic/Remote Reboot for Servers



### Additional Applications

- ✓ Reboot Network Devices
- ✓ Reboot Computers
- ✓ Remote Power Control
- ✓ More...

#### Models:

- XRDI-WS3P-NA, XRDI-WS3P-IN

#### Power Requirements

- Voltage: 100-240V AC (47-63Hz)
- Input Frequency: 47-63Hz
- Input Connector: IEC 320 Appliance Connector (C14 Male)
- Max Current: 10A \*(DO NOT USE WEBSWITCH TO CONTROL MORE THAN 10 AMPS)\*

#### Relay Contacts

- Number of Relays: 2
- Relay Connector: IEC C13 Female
- Contact Type: SPDT (Form 1C)
- Load Type: General Purpose
- Contact Resistance: < 30 milliohms initial
- Contact Material: AgSnO2
- Electrical Life: 100K cycles (Typical)
- Mechanical Life: 10M cycles (Typical)
- Environmental Rating: Over voltage Category II, Pollution Degree 2
- Relay Modes: ON/OFF or Pulse/Reboot
- Pulse Timer Duration: 0.1 to 86,400 Seconds (1-day)

#### Digital Inputs

- Number of Inputs: 2
- Type: Non-Isolated
- Voltage Range: 0-5VDC
- Current: 47K Pullup
- Minimum Hold Time: 20ms
- Input Isolation: Non-Isolated
- Input Functions: Emails Alerts, SNMP Traps

#### Temperature Sensors

- Maximum Number of Sensors: 3
- Type: Dallas Semiconductor DS18B20
- Temperature Range: -67°F to 257°F (-55°C to +125°C)
- Accuracy: ±0.5°C (from -10°C to +85°C)
- Sensor Functions: Monitor Temperature, Log Temperature, Email Alerts, SNMP Traps
- Humidity Type: Xytronix Model X-DTHS-WM wall mount sensor
- Humidity Range: 0-100% RH
- Accuracy: ±1.8%

#### Real-Time Clock

- Manual or NTP (Network Time Protocol) setup
- NTP Sync Period: Once, Daily, Weekly, On Power-up
- Auto Daylight Savings Adjustment
- Battery (capacitor) Power Backup

#### Capacitor Power Backup

- Backup Functions: Retain Real-Time Clock, External Variables, Outlet State.
- Backup Duration: 3 days minimum

#### Network

- Type: 10/100 Base-T Ethernet Port
- Setup: Static IP address assignment or DHCP, HTTP port selectable

#### Connectors

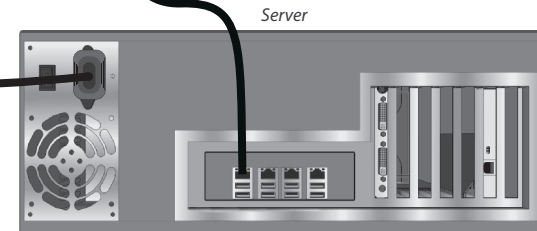
- Output Connectors: IEC 320 Appliance Connector (C13 Female)
- Network: 8-pin RJ-45
- Digital Inputs & Temperature: 5-Position Removable

#### LED Indicators

- Number of LEDs: 5
  - Power on
  - Out On 1-2
  - Network linked
  - Network activity

#### Physical

- Operating Temperature: -4°F to 104°F (-20°C to 40°C)
- Size:
  - 10.65 inches (27.11 cm) wide
  - 1.75 inches (4.44 cm) tall
  - 3.29 inches (8.36 cm) deep
- Weight: 1 lb. 3 oz. (542 grams)
- Enclosure Material: Lexan 940 Polycarbonate Plastic
- Enclosure Flame Rating: UL94 V0



#### Protocols

- HTTP, XML, Modbus, SNMP, Remote Services

#### Password Settings

- Password protection on setup page: Yes
- Password protection on control page: Optional
- Password Encoding: Base 64
- Max Password Length: 13 Characters

#### Electromagnetic Compliance:

- IEC CISPR 22, CISPR 24
- FCC 47CFR15
- EU EN55024, EN55022
- EN55022:2006: Class B
- EN61000-3-2
- EN61000-3-3
- EN55024:2006
- IEC 61000-4-2
- IEC 61000-4-3
- IEC 61000-4-4
- IEC 61000-4-5
- IEC 61000-4-6
- IEC 61000-4-8
- IEC 61000-4-11
- ITE-Class B



#### Product Safety Compliance

- CAN/CSA-C22.2 No. 60950-1-03 First Edition
- IEC 61010-1